

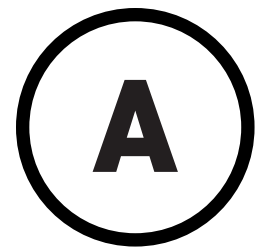
St. John's Unitarian Universalist Church

Facility Improvement Options | 05.22.22

St. John's Unitarian Universalist Church

Facility Improvement Options | 05.22.2022

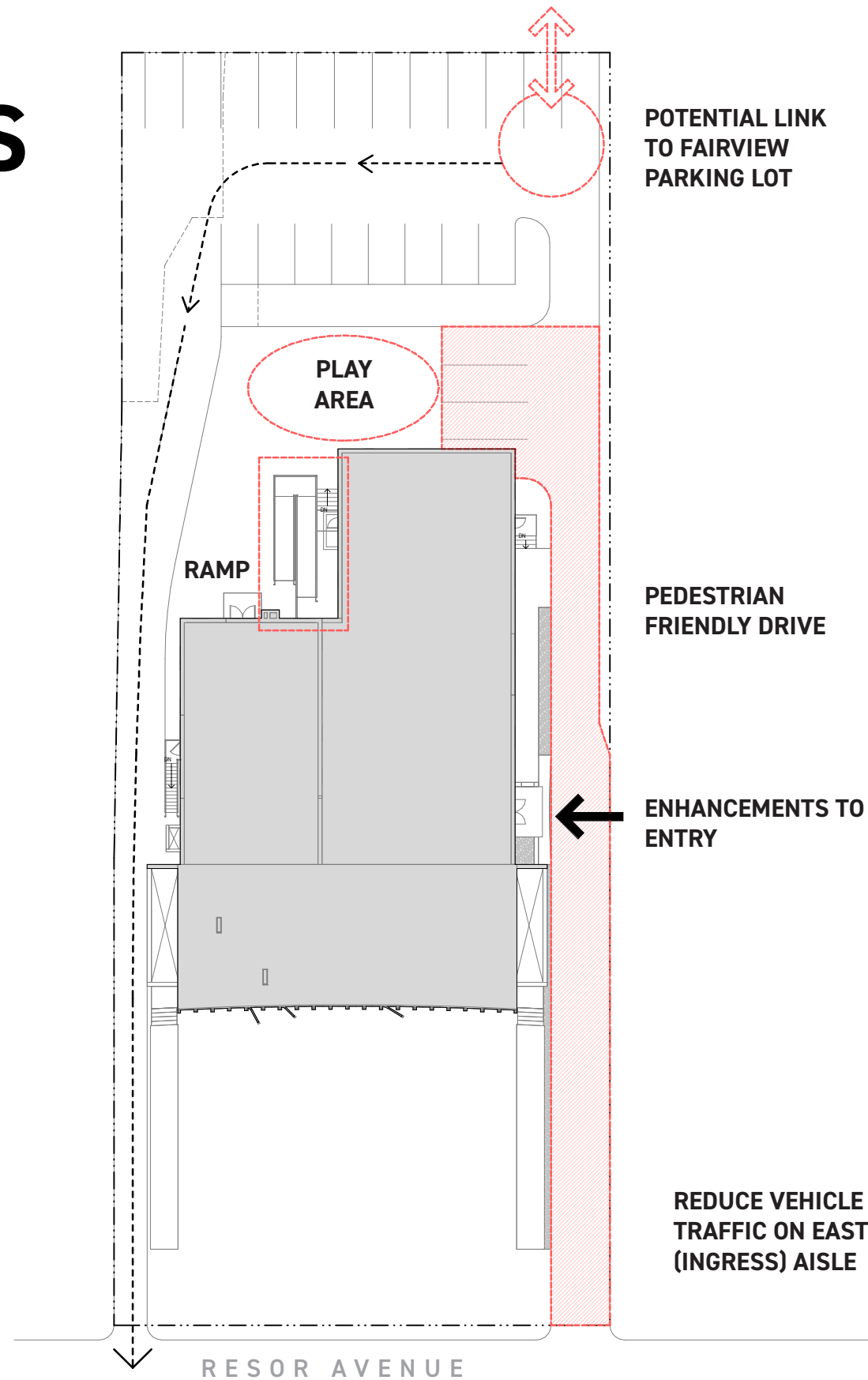
- A** **Site Improvements**
- B** **C** **D** **Room Renovations**
- E** **Bema Accessibility**
- F** **Building Accessibility**
- G** **‘Welcome Center’**
- H** **Building Addition**
- i** **Krolfifer Event Center**

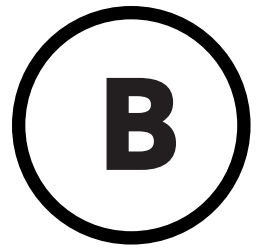


SITE IMPROVEMENTS

ENHANCE APPROACH & PROMOTE SAFETY FOR PEDESTRIANS AND CHILDREN

PACKAGE A: \$185,000
LOADING RAMP: \$110,000



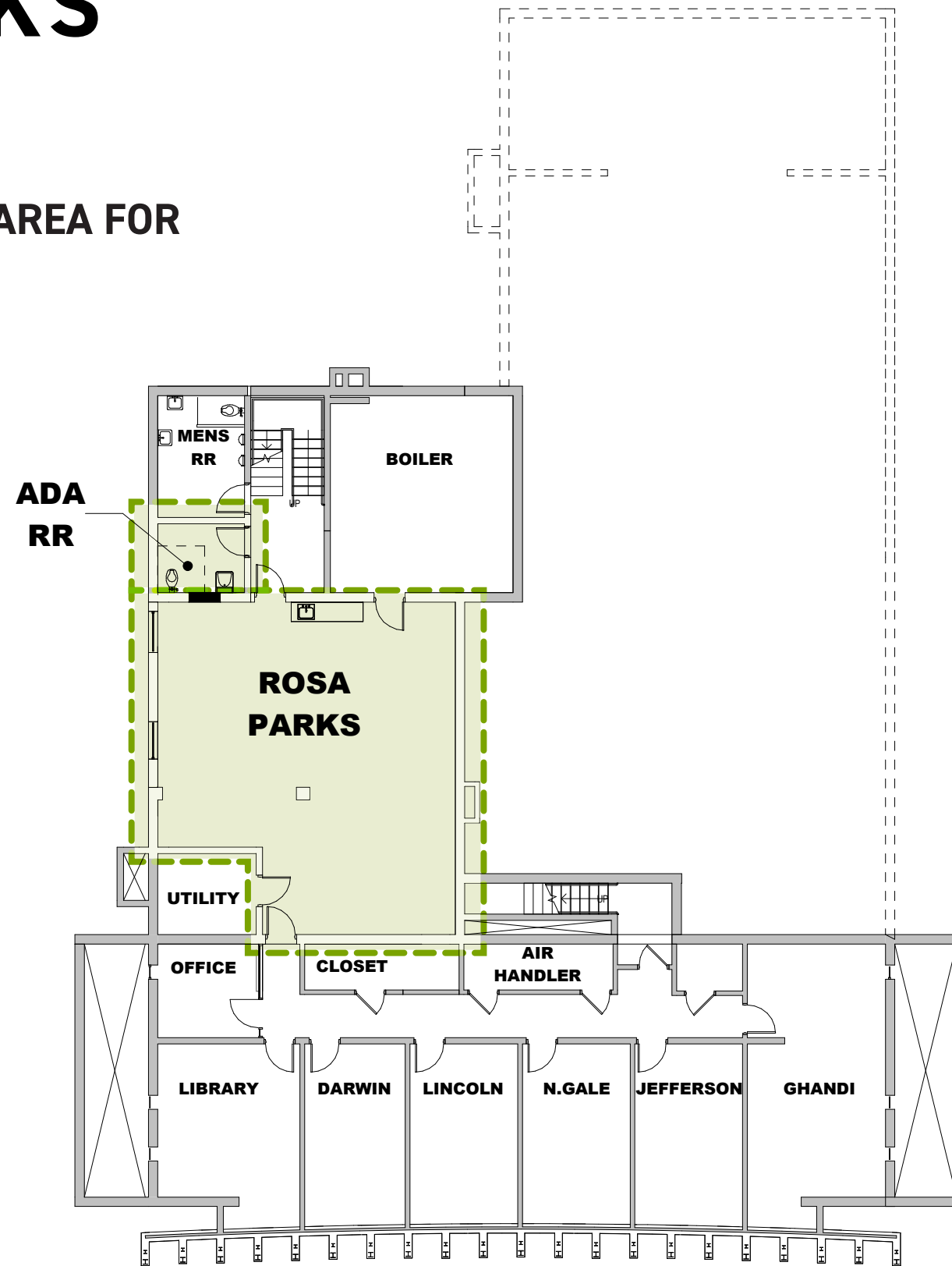


ROSA PARKS REFRESH

LIGHTEN AND BRIGHTEN AREA FOR
YOUNG PEOPLE

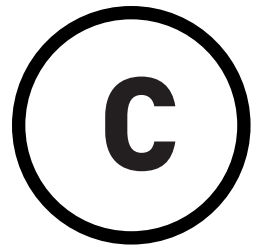
PACKAGE B: \$70,000

ADA RESTROOM: \$15,000



BASEMENT LEVEL

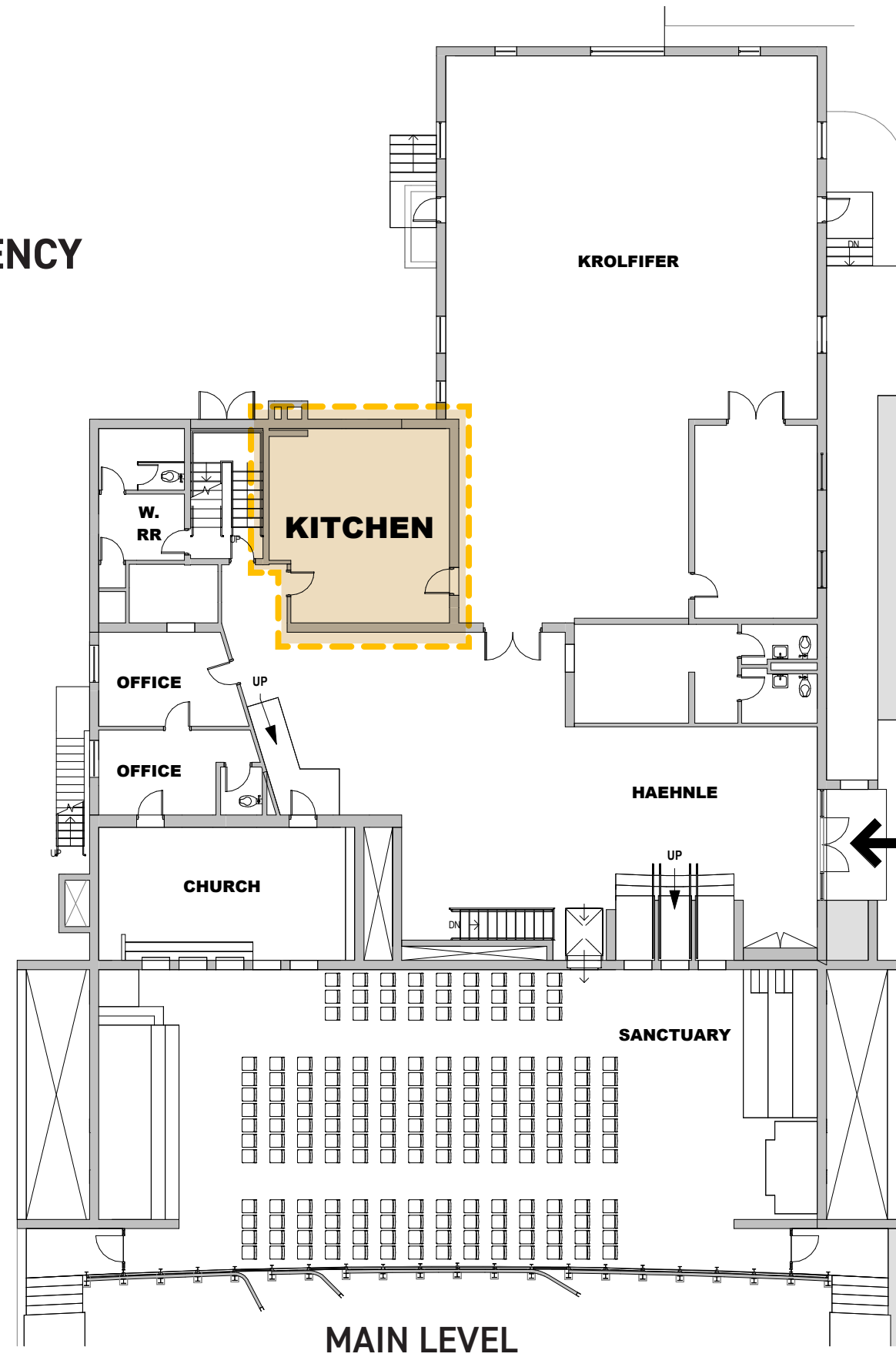




KITCHEN REFRESH

UPDATE & INCREASE EFFICIENCY

PACKAGE C: \$269,000





PACKAGE D: \$121,000

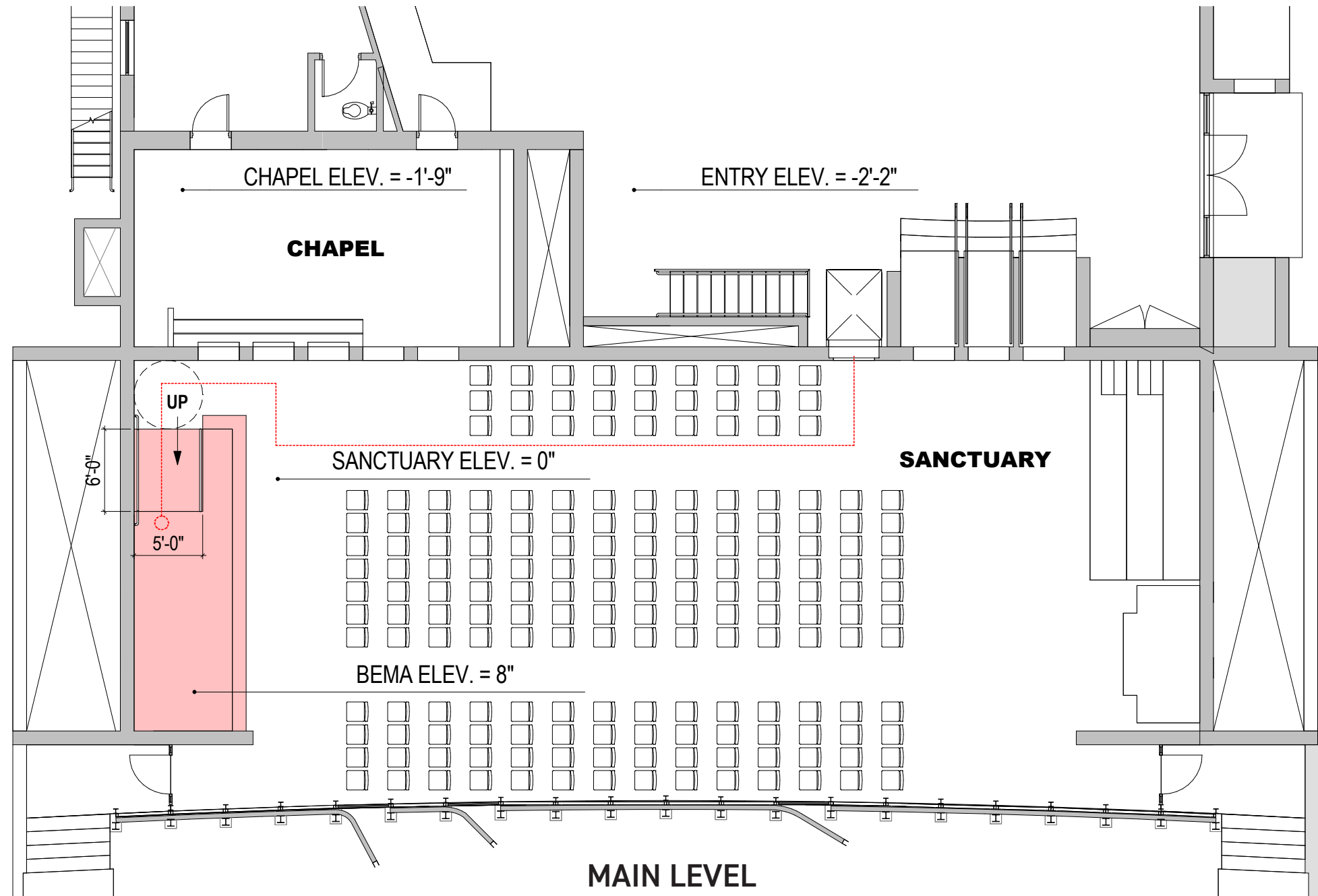




BEMA ACCESSIBILITY

OPTION 1: LOWER BEMA & ADD RAMP

PACKAGE E.1: \$30,000

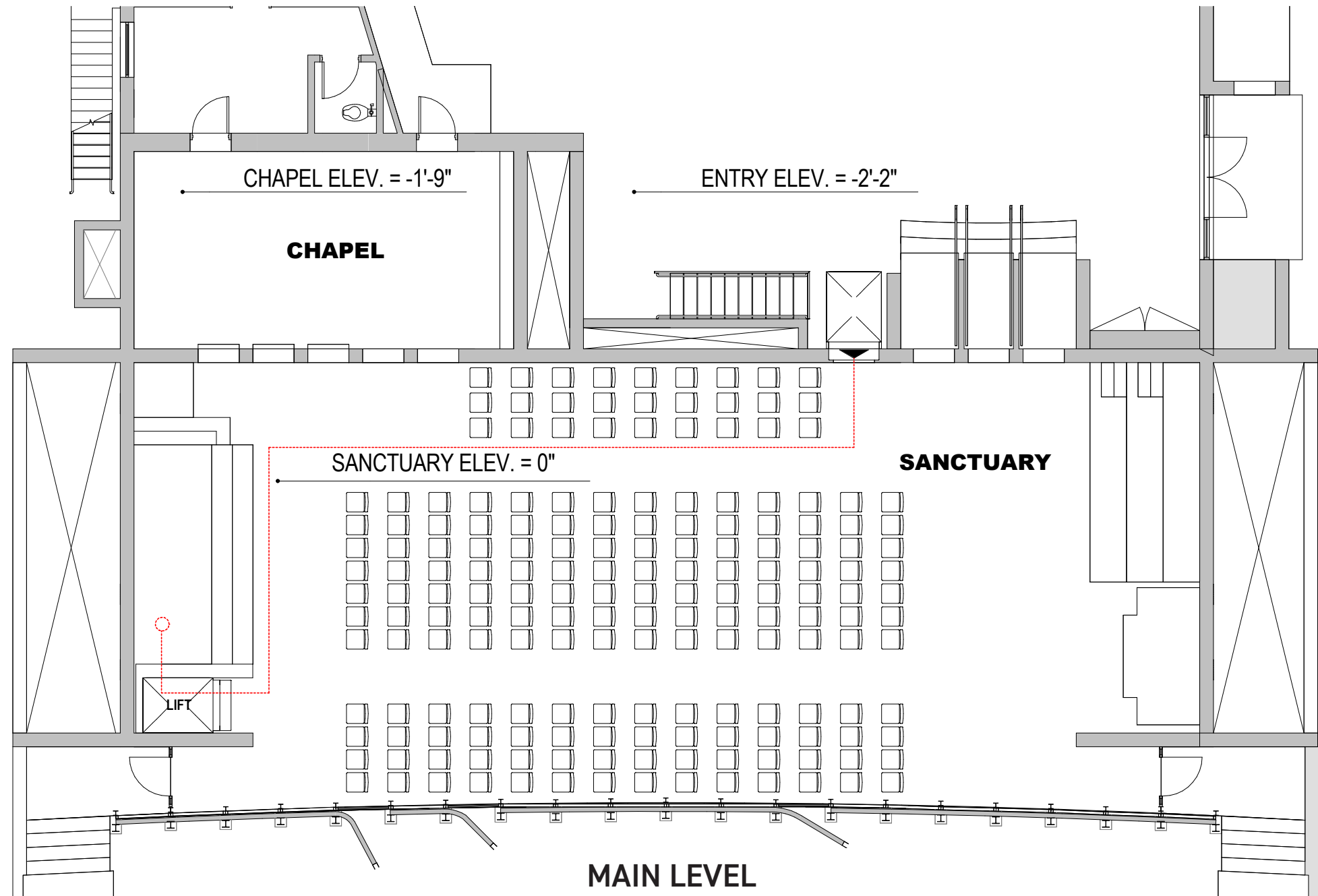


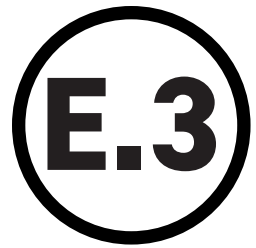


BEMA ACCESSIBILITY

OPTION 2: ADD LIFT WITHIN SANCTUARY

PACKAGE E.3: \$33,000

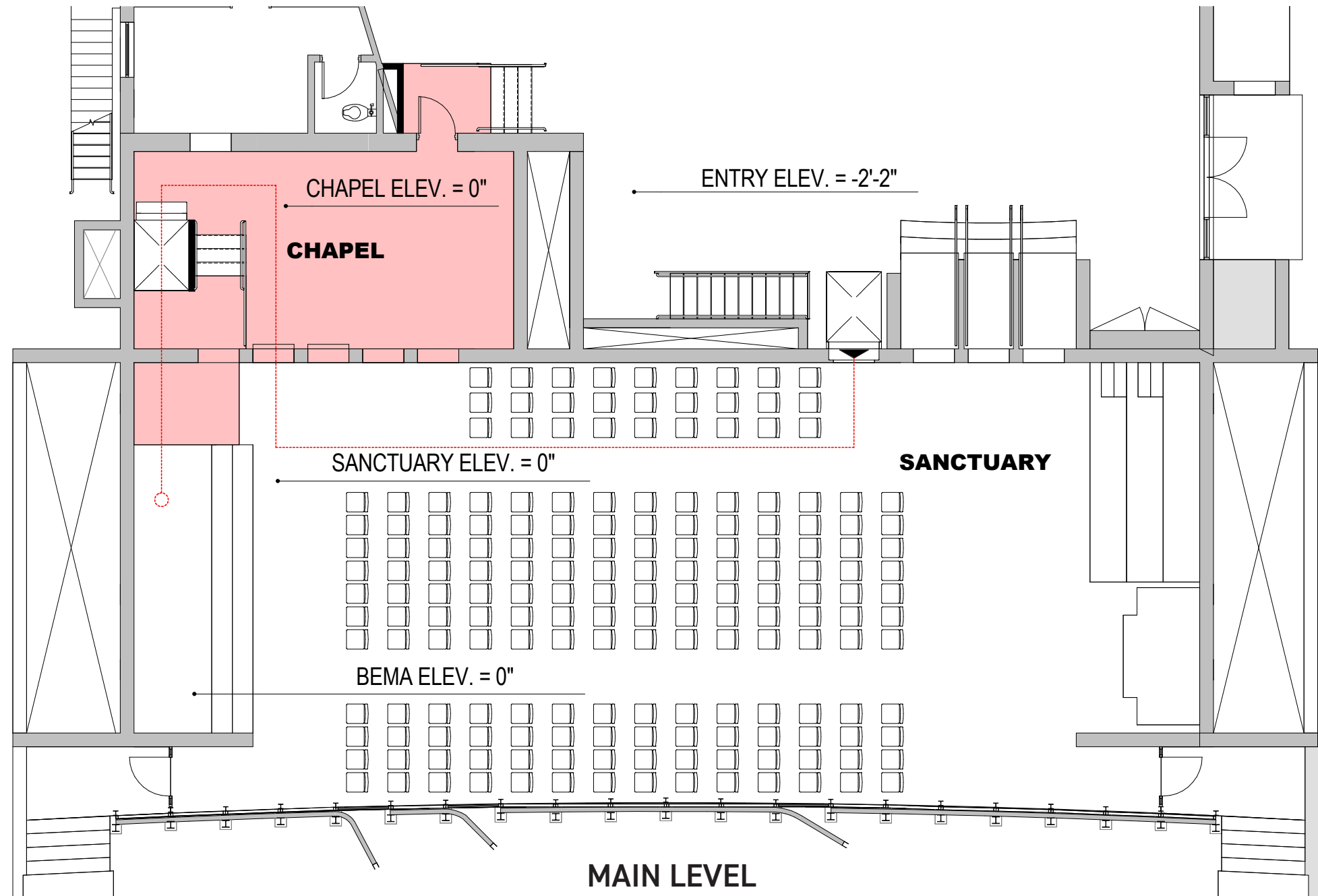




BEMA ACCESSIBILITY

OPTION 3: ELEVATE CHAPEL FLOOR & EXTEND BEMA

PACKAGE E.3: \$83,000

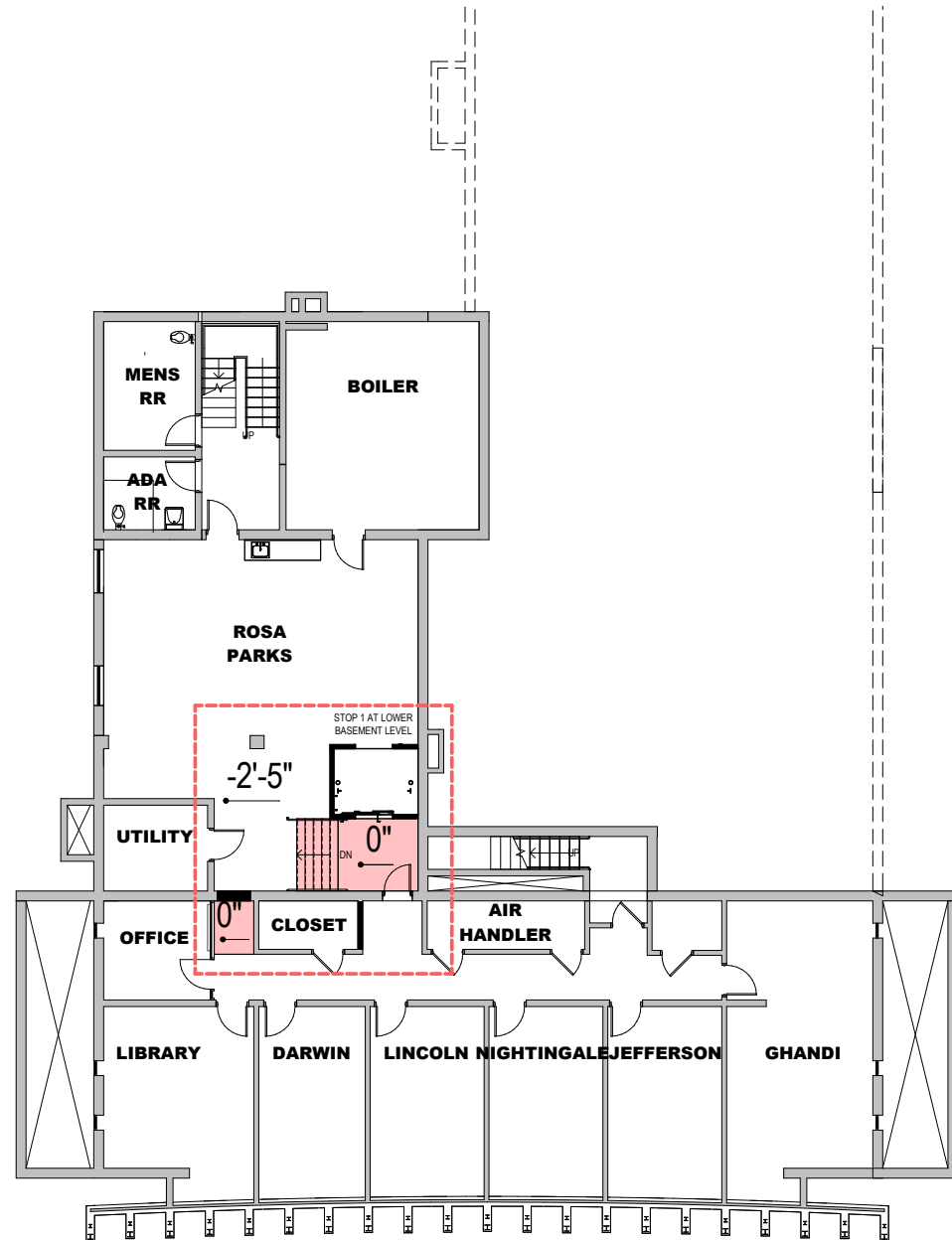




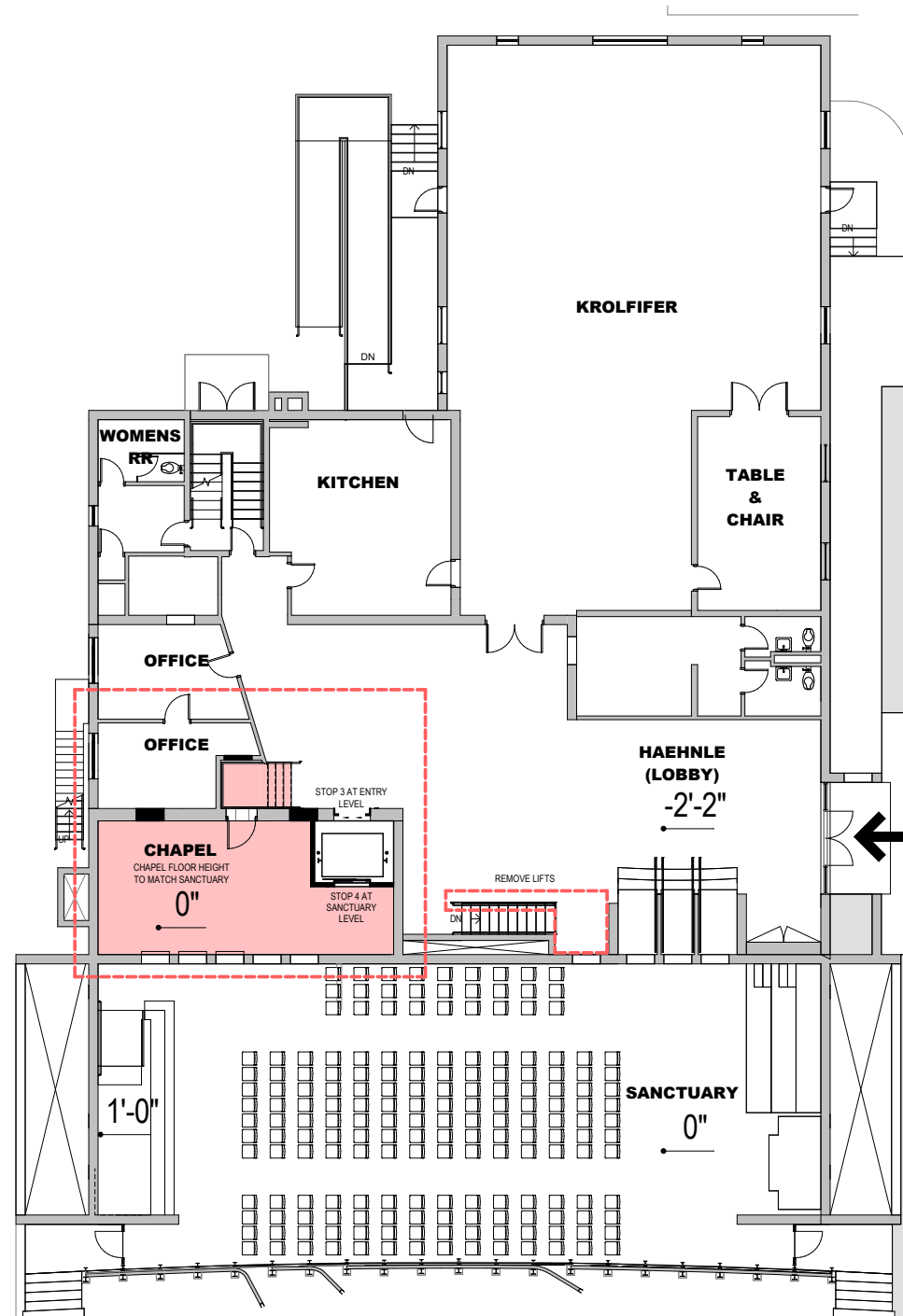
BUILDING ACCESSIBILITY

OPTION 1: FULL SIZED ELEVATOR

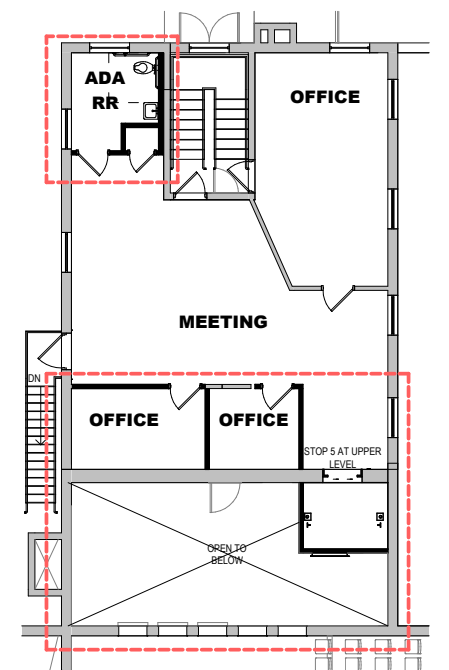
PACKAGE F.1: \$735,000



BASEMENT



MAIN LEVEL



SECOND LEVEL

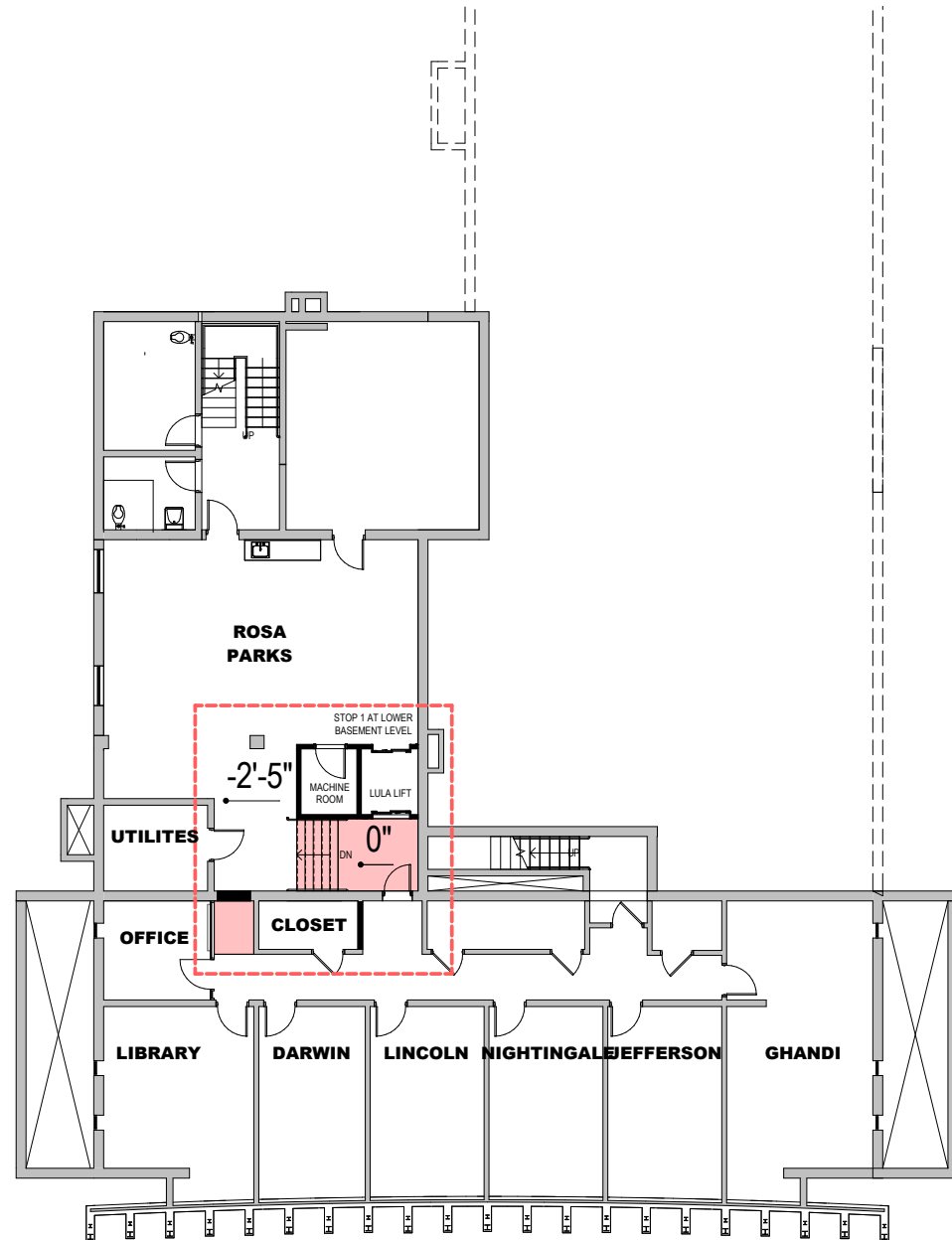




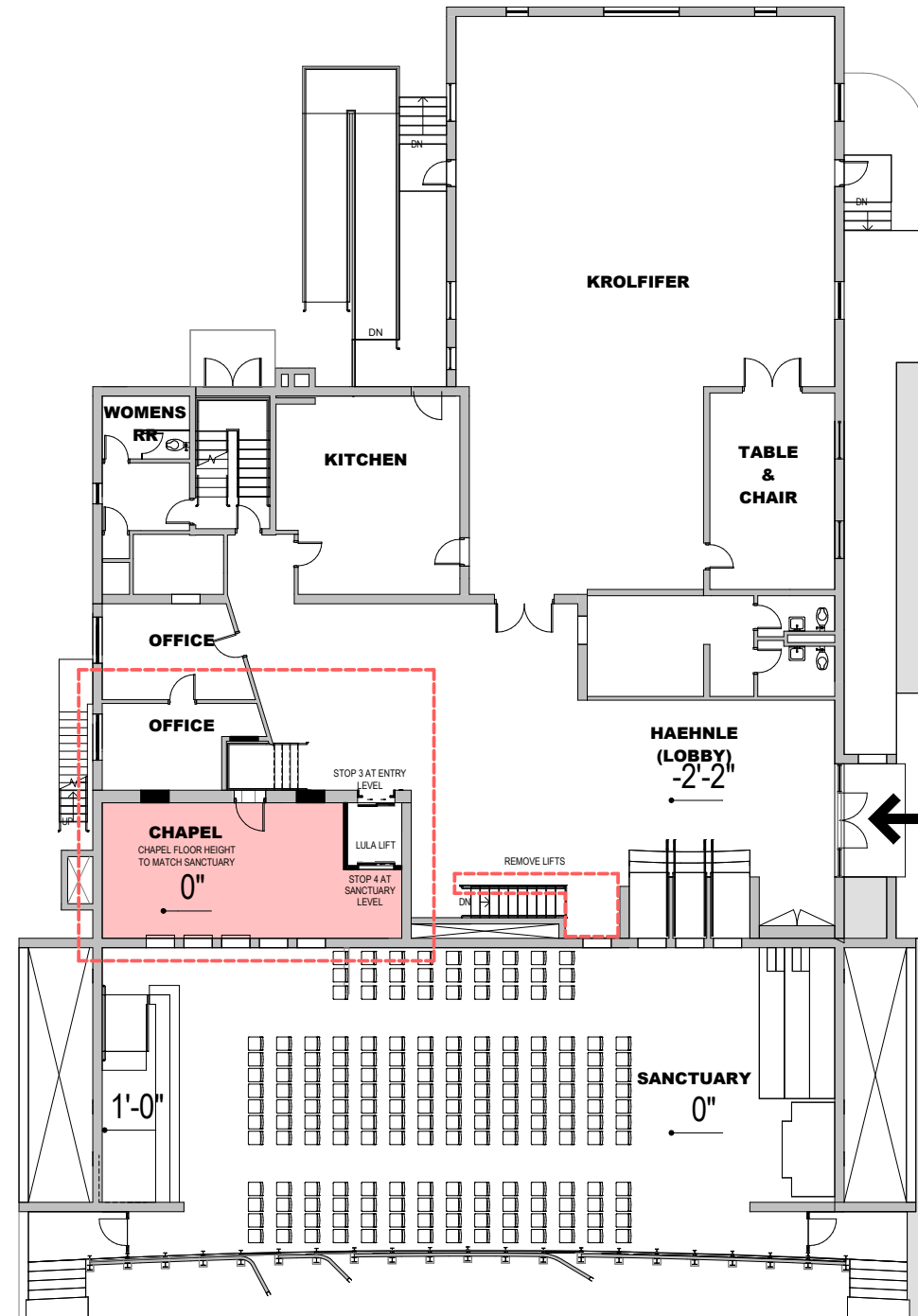
BUILDING ACCESSIBILITY

OPTION 2: LULA (LIMITED USE, LIMITED ACCESS) LIFT

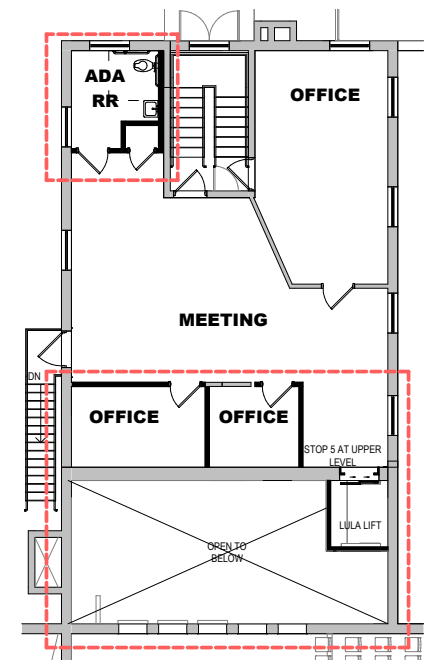
PACKAGE F.2: \$685,000



BASEMENT



MAIN LEVEL



SECOND LEVEL



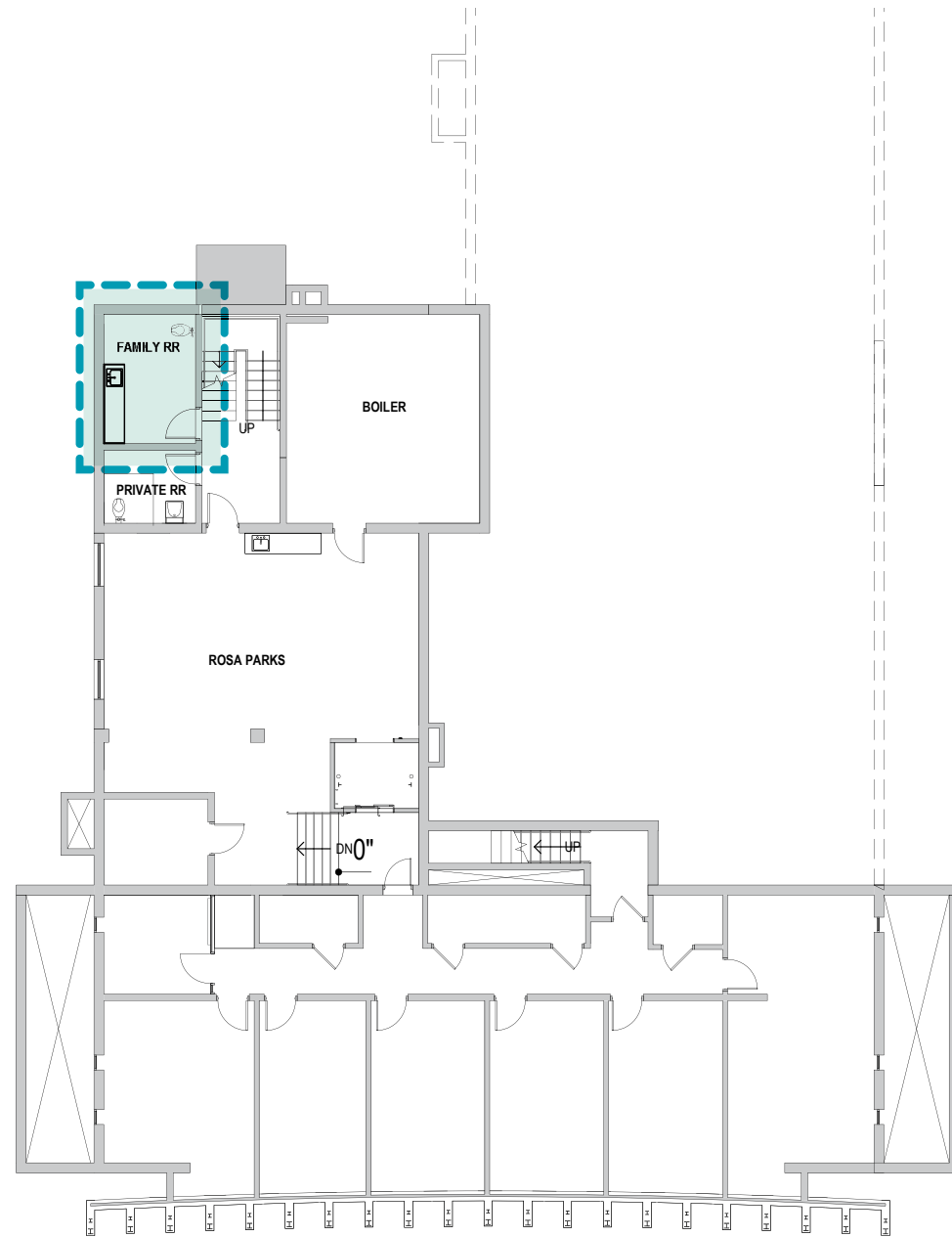


'WELCOME CENTER'

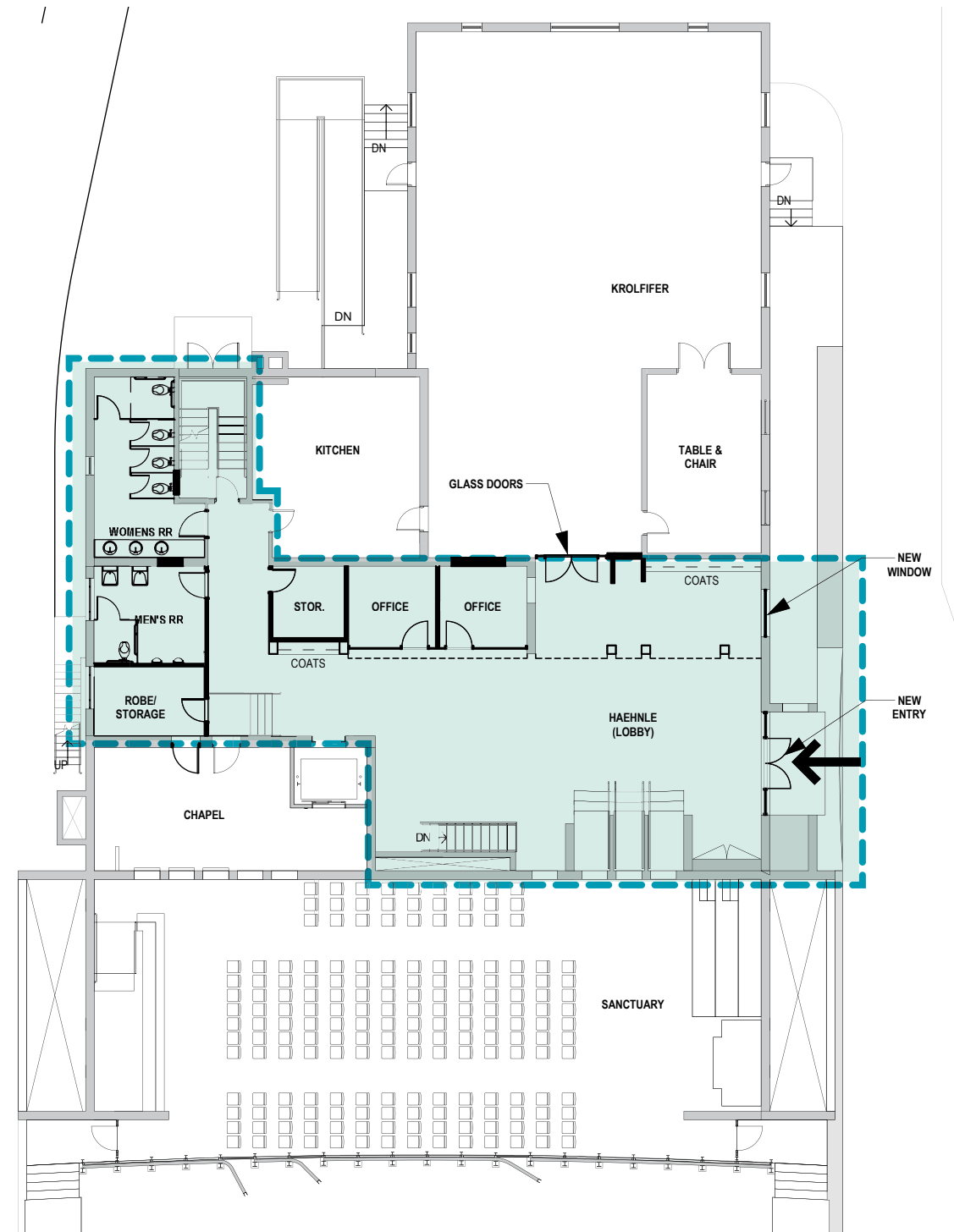
INVITING ENTRY AT HAEHNLE & RESTROOM IMPROVEMENTS

PACKAGE G: \$500,000

ADA RESTROOM: \$20,000

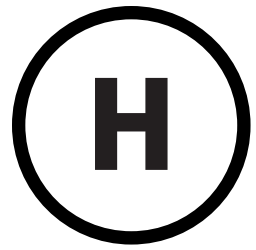


BASEMENT



MAIN LEVEL

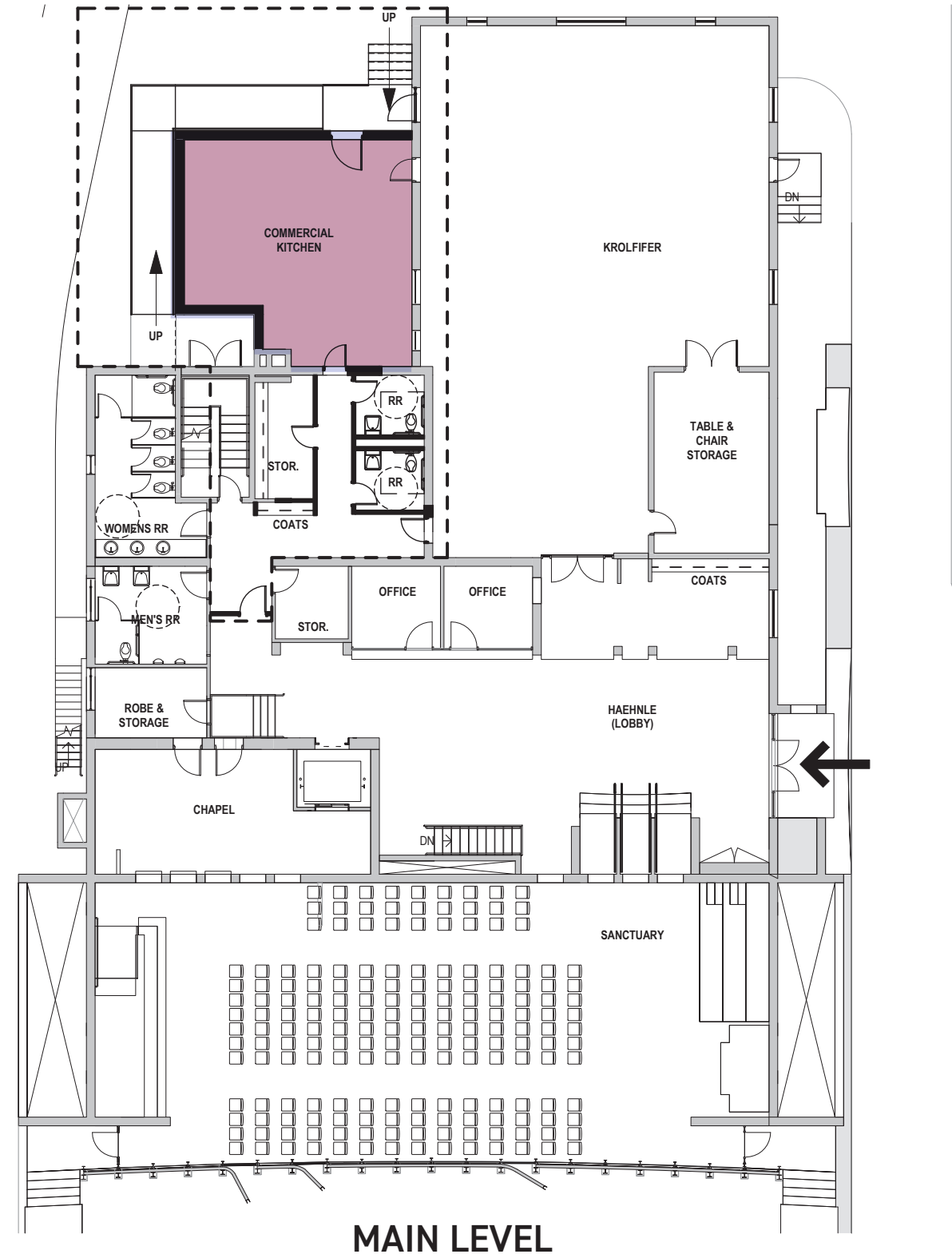


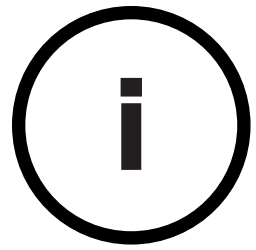


BUILDING ADDITION

NEW KITCHEN & ADDITIONAL RESTROOMS

PACKAGE H: \$1,010,000

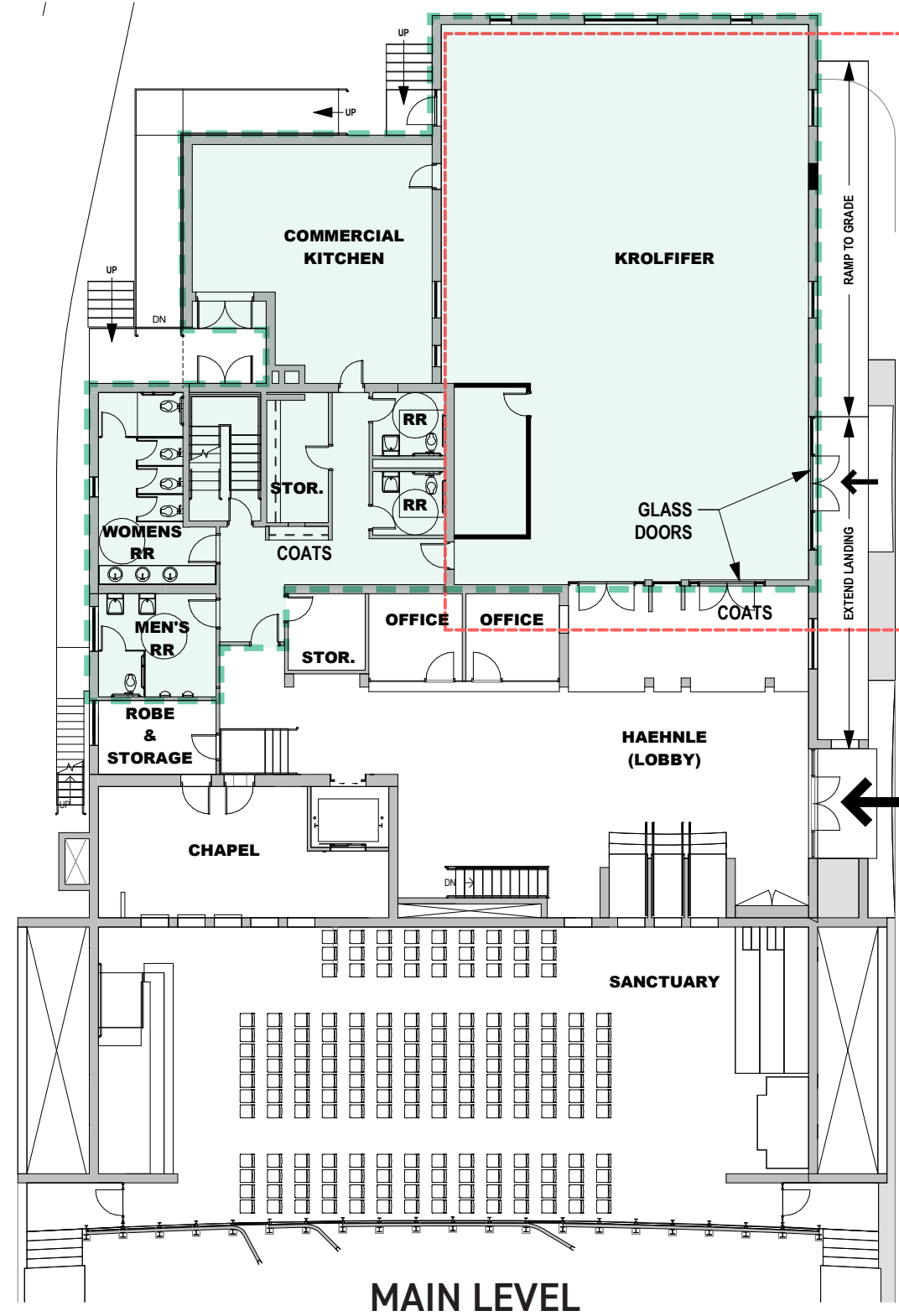




KROLFIFER EVENT CENTER

KROLFIFER & KITCHEN CAN FUNCTION INDEPENDENTLY

PACKAGE i: \$245,000



St. John's Unitarian Universalist Church

Facility Improvement Options | 05.22.2022